

# JRMD Series Thermostats

## JRMD Series

### Description:

The model JRMD Series is a bimetallic creep action( slow break / slow make ) temperature regulating or thermal limiting device and are available with gold diffused contacts for low voltage/current application.

### Features:

- 1) Factory pre-set calibration; not field adjustable
- 2) No-built-in differential between, opening and closing temperature
- 3) Available in normally closed and normally open configuration
- 4) Conductive bimetal carries the circuit current
- 5) Different insulating sleeves



### Electrical Ratings:

6 AMPS@120VAC

Temperature range from 5 C to 150C in 5deg. increments

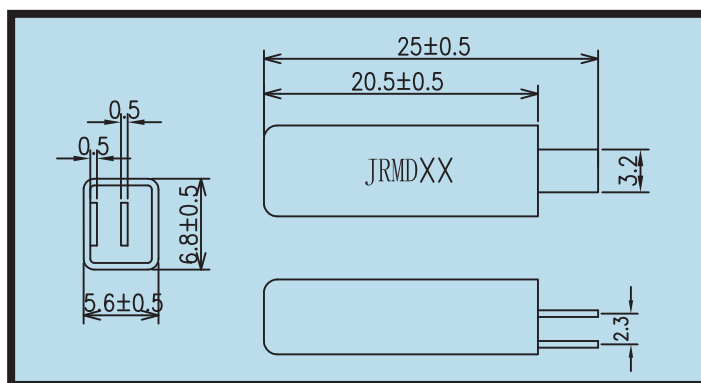
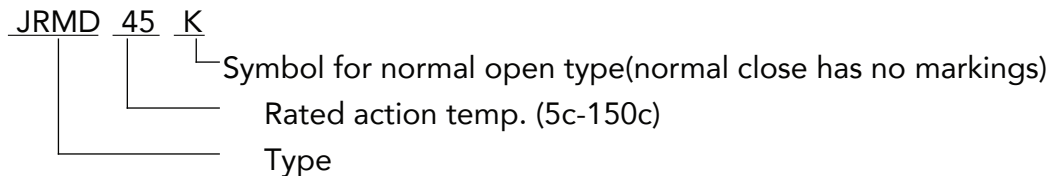
Standard tolerance +/-5C

Optional +/-3C

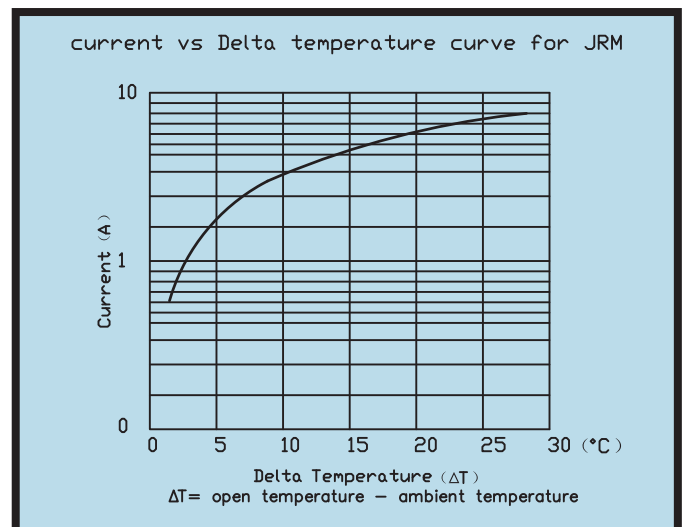
UL & C-UL rated for 100,000 cycles

Contact Resistance: <50 m ohm

### Markings:



\*Complying with RoHS

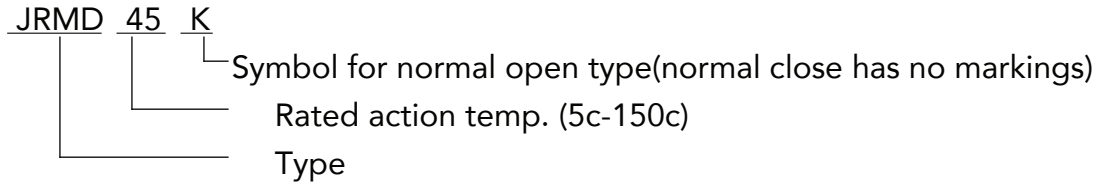


Phone: 330-966-3796  
Fax: 330-408-7085  
sales@calcoelectric.com  
2381 Locust St. S., Unit #6  
Canal Fulton OH, 44614  
www.calcoelectric.com

# JRMD Series Thermostats

## JRMD Series

### Markings:



### Figure:

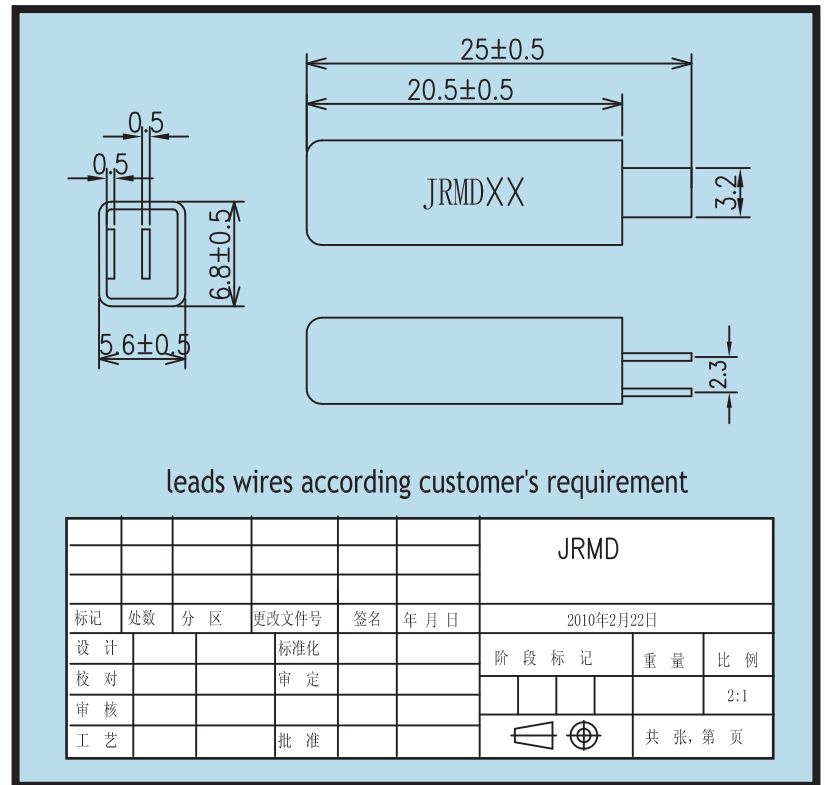
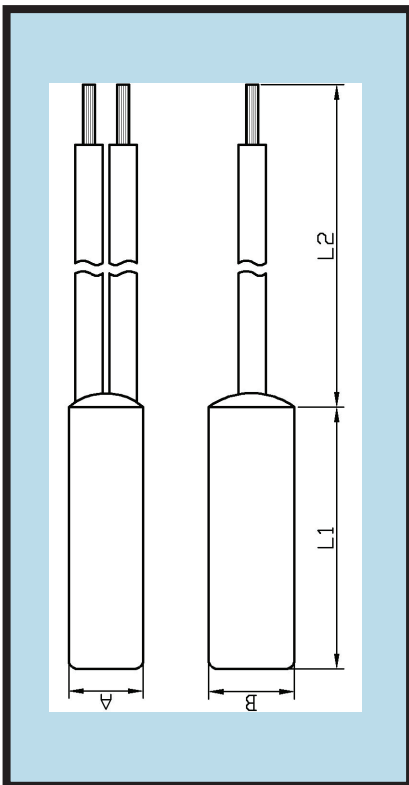
Code of figure (mm) Type	A	B	L1	L2
JRMD	XX	XX	XX	According to customers' requirement

### Certification:

- UL

- TUV

- Complying with RoHS



Phone: 330-966-3796  
 Fax: 330-408-7085  
 sales@calcoelectric.com  
 2381 Locust St. S., Unit #6  
 Canal Fulton OH, 44614  
 www.calcoelectric.com